

PRECISION AND HIGH STABILITY L-SHAPED STEEL OPTICAL MOUNTS

- **Special flat spring for improved stability, versatility and durability**
- **Kinematics, orthogonal angular adjustments**
- **Tilt/tip 9° range with 5 arcsec sensitivity**
- **Left or right hand mounting**
- **Vertical and horizontal mounting**

Highly Stable Precision L-shaped Optical Mounts are designed on the basis of two-angles adjustment mount, and are made of steel with black chemical finishing. Special figure spring is used in these mounts for two purposes:

- It provides pre-loading against the tips of two precise driving screws for elimination of backlash.
- It ensures the absence of the roll coordinate.

The Highly Stable Precision L-shaped Optical Mounts have two M10x1 threaded mounting holes for mounting of the actuators. M6 tapped holes on the sides provide a wide variety of mounting configurations, either horizontal or vertical. A special L-shaped design of the mounts provides maximum clear aperture.

840-0036

STABLE STEEL MIRROR/BEAMSPLITTER MOUNTS

- **Special flat spring for improved stability versatility and durability**
- **Suitable for 1", 2", 3", 4", 6" optics**
- **6° range**
- **Kinematics, orthogonal angular adjustments**
- **Left or right hand mountable**
- **Vertical and horizontal mounting**

Special holders with two Teflon dowel pads and Teflon fixing screw. The mount is ideal for precision adjustment of 1" (25.4 mm), 2" (50.8 mm), 3" (76.2 mm), 4" (101.6 mm) or 6" (152.4) mirrors or beamsplitters.

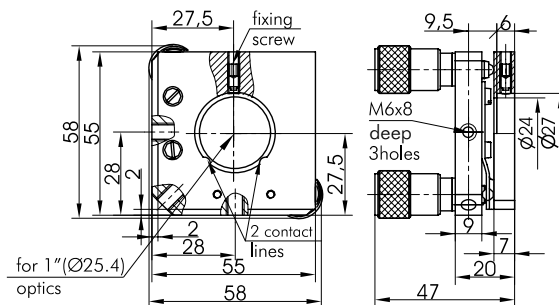
The mount comes with 870-0030 screw as standard. You may choose different screws. If you order the mount with alter-

native screws, please specify this in order, by appending the screw code name to the mount code.

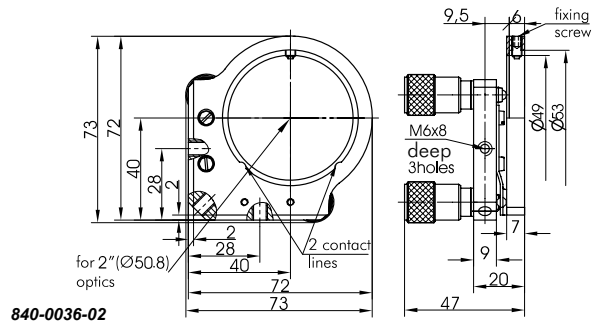
Models for 1", 2" and 3" optics made entirely of black anodized steel (back and front plates). Models for 4" and 6" optics use front plate made of black anodized aluminium.

	840-0036-01	840-0036-02	840-0036-03	840-0036-04	840-0036-05
Optics diameter	1" (25.4 mm)	2" (50.8 mm)	3" (76.2 mm)	4" (101.6 mm)	6" (152.4 mm)
Mechanism	kinematic				
Drive type	knob				
Adjustments	Øx, Øy				
Special features	center mount				
Angular range	8°	8°	6°	5°	4°
Sensitivity 0.5 mm fine thread	6 arcsec	6 arcsec	5 arcsec	4 arcsec	3 arcsec
Sensitivity 0.25 mm fine thread	3.4 arcsec	3.4 arcsec	2.3 arcsec	1.8 arcsec	1.5 arcsec
Material	Steel	Steel	Steel	Steel	Base - steel, front - aluminium
Mounting thread	M6 (3 holes)	M6 (3 holes)	M6 (5 holes)	M6 (4 holes)	M6 (6 holes)
Mounting	post, baseplate				
Optic Thickness	universal				
Optical axis height	27.5 mm	40 mm	53 mm	65 mm	96 mm
Adjustment screw	870-0030 (0.5 mm fine thread)				
Mounting thread for fine screw ¹	M10x1				
Weight, kg	0.07	0.18	0.44	1.04	1.4
Price, EUR	89	114	147	177	266

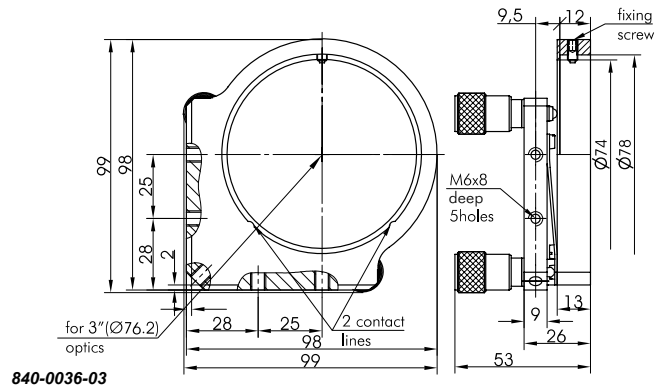
¹ Micrometer can be replaced with fine screw.



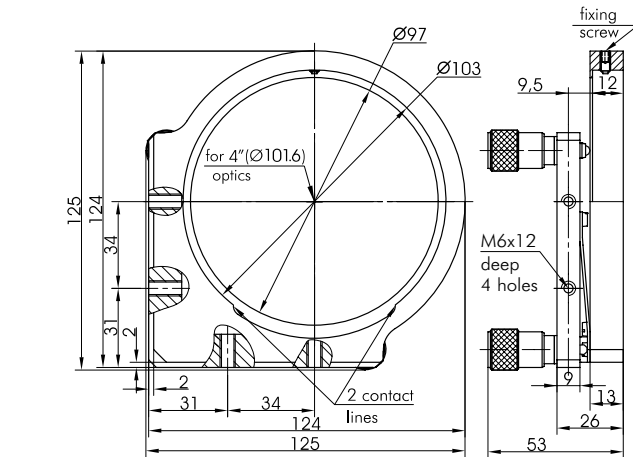
840-0036-01



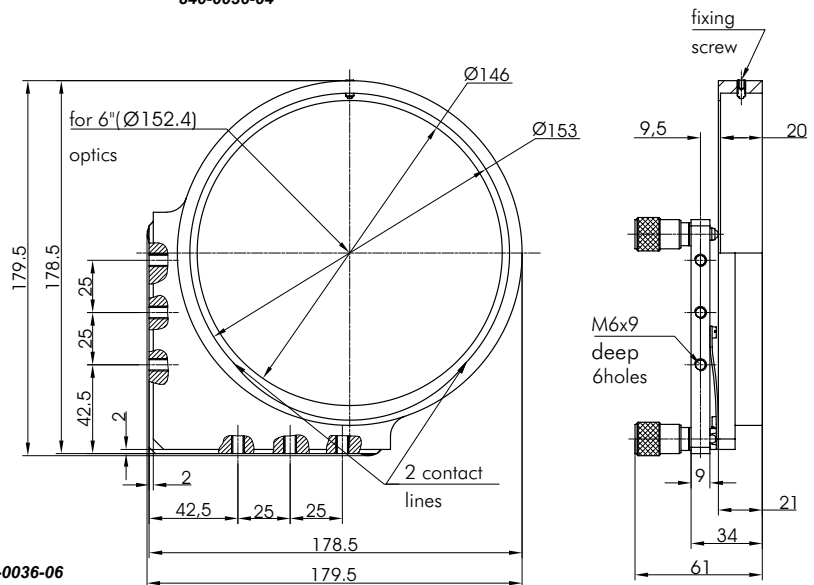
840-0036-02



840-0036-03



840-0036-04



840-0036-06

OPTICAL TABLES

BRACKETS & RAILS

BASE MOUNTS & ACCESSORIES

OPTICAL MOUNTS

OPTICAL POSITIONERS

BASE POSITIONERS

TRANSLATION & ROTATION STAGES

ADJUSTMENT SCREWS

MOTORIZED POSITIONERS